



永匯豐科技有限公司
EVER SHARP TECHNOLOGY INC.

URL: www.eversharp.com.tw

Glue Dispenser

Manufacturer & Exporter

專業點膠設備製造廠



innovating technology advances workflow

永匯豐科技秉持著「突破技術，創新流程」的研發理念，從事點膠機及週邊配件的設計與製造。

EVER SHARP is a manufacturer of dispensing systems, always with the theme "innovating technology advances workflow" in mind.

歡迎經銷商、代理商與我們聯絡。

Please feel free to contact our staff for more information.

Index

Robotic System

P.2



Dispensing System

P.4



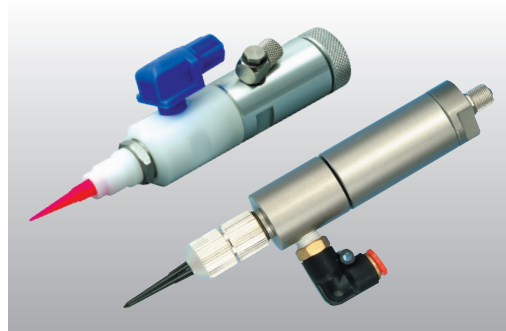
Rotary System

P.8



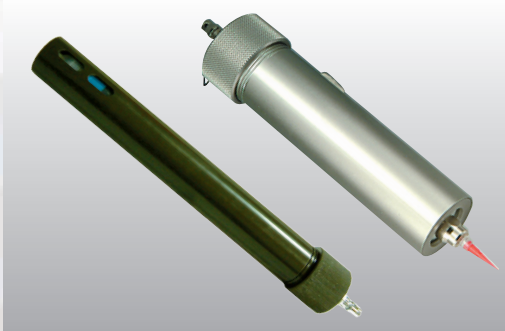
Precision Valve

P.9



Retainer

P.10



Reservoir

P.11



UV Cure

P.14



Accessories

P.16





Innovating Technology Advances Workflow

Eversharp technology was established formally in December of 2000. The company started off in the manufacturing of glue dispensers and its accessory parts. High-accuracy glue dispensers can be applied to the production lines of every profession and trade, from navigation technology to the semiconductor industry to traditional everyday product assembling and packaging. Not only can they shorten product development and manufacturing time, but they can also reduce the cost of labor and resources. Eversharp has successfully launched a line of semi-automatic and fully-automatic glue dispensers. We adhere to the motto "innovation technology advances workflow", putting all our effort into developing one of the most precise and user-friendly glue dispenser found in the market today. Our research and developing team are here to meet the customer's demands, adjusting and modifying our product to suit your needs, helping your company advance in this era of automation.

At present, EverSharp has established a renowned spot in the domestic glue dispensing market, catering to well-known enterprises and education and research facilities. Our services have expanded globally to accommodate customers in Mainland China as well as in Southeast Asia. Promising collaborations with agents in Europe and the United States are currently underway. Through collaborations and alliances, EverSharp plays a key role in supplying and integrating components necessary for product development and the promotion of domestic production.

**Distributor and agent are welcome,
Please contact us for further detail.**



**All model and system are
CE and FCC certified.**

Robotic System

ES600FL Tower Type Robotic System



Characteristic

ES600FL is a PC-based tower robot that employs a camera and hi-precision servo motor which allows the user to view and precisely position the dispensing route. Using two points OCR technology, this system can automatically adjust the route to reduce errors to a minimum. The full tower design allows the system to adapt into any production chain.

STANDARD

Model	ES600FL	Driving Method	XYZ : Screwball
Working Range	600 / 600 / 100 (mm)	Interpolation Function	3 axis
Max. Loading	XY 20 kg / Z 7 kg	Programming Method	WinXP with CCD
Moving Speed	XY 0.1-800 / Z 500 (mm/sec)	I/O Signals Port	16 Inputs / 16 Outputs
Resolution	0.01 mm/Axis	Power Input	AC220V 300W
Repeatability	+/- 0.01 mm/ Axis	Dimensions	W-1450 x L-1260 x H-1580 mm
Program Capacity	PC file format (unlimit) / support AUTOCAD	Weight	800kg
Motor System	Hi-Precision Mitsubishi Servo Motor		

ES300SR Precise Vision Robotic System



Characteristic

ES300SR is a PC-based desktop robot that employs a camera and hi-precision servo motor which allows the user to view and precisely position the dispensing route. Using two points OCR technology, this system can automatically adjust the route to reduce errors to a minimum. This automatic route editor is not only available for dispensing but also for any applications that utilizes I/O to trigger the components in the automation process.

STANDARD

Model	ES300SR	Driving Method	XYZ : Screwball
Working Range	600 / 600 / 100 (mm)	Interpolation Function	3 axis
Max. Loading	XY 20 kg / Z 7 kg	Programming Method	WinXP with CCD
Moving Speed	XY 0.1-800 / Z 500 (mm/sec)	I/O Signals Port	16 Inputs / 16 Outputs
Resolution	0.01 mm/Axis	Power Input	AC220V 300W
Repeatability	+/- 0.01 mm/ Axis	Dimensions	W-600 x L-900 x H-850 mm
Program Capacity	PC file format (unlimit) / support AUTOCAD	Weight	108kg
Motor System	Hi-Precision Mitsubishi Servo Motor		

ES300VR Smart Vision Robotic System

Characteristic

ES300VR is a new generation of 3-Axis work station with light weight design. It is a PC-based desktop robot that employs a camera which allows the user to view and precisely position the dispensing route. Using two points OCR technology, this system can automatically adjust the route to reduce errors to a minimum. This automatic route editor is not only available for dispensing but also for any applications that utilizes I/O to trigger the components in the automation process. We do carry other working range model (200X200、400X400), please contact us for further detail.



STANDARD

Model	ES300VR	Driving Method	XY : Belt Z : Screwball
Working Range	300 / 300 / 100 (mm)	Interpolation Function	3 axis
Max. Loading	XY 10 kg / Z 5 kg	Programming Method	WinXP with CCD
Moving Speed	XY 0.1-500 / Z 250 (mm/sec)	I/O Signals Port	8 Inputs / 8 Outputs
Resolution	0.01 mm/Axis	Power Input	AC110-220 300W
Repeatability	+/- 0.01 mm/ Axis	Dimensions	W-485 x L-500 x H-600 mm
Program Capacity	PC file format (unlimit) / support AUTOCAD	Weight	35kg
Motor System	Japan mico step motor		

ES300D Smart Robotic System

Characteristic

ES300D is a new generation of 3-Axis work station with light weight design. The system is really easy and simple to operate with the multi language user friendly control pannel. The system is built with 99 program capacity and several I/O port connection that will suit your mulit purpose work flow. We do carry other working range model (200X200、400X400), please contact us for further detail.



STANDARD

Model	ES300D	Driving Method	XY : Belt Z : Screwball
Working Range	300 / 300 / 100 (mm)	Interpolation Function	3 axis)
Max. Loading	XY 10 kg / Z 5 kg	Programming Method	Multi Language Control Panel
Moving Speed	XY 0.1-500 / Z 250 (mm/sec)	I/O Signals Port	8 Inputs / 8 Outputs
Resolution	0.01 mm/Axis	Power Input	AC110-220 300W
Repeatability	+/- 0.01 mm/ Axis	Dimensions	W-485 x L-500 x H-600 mm
Program Capacity	99 sets / CF Card	Weight	32kg
Motor System	Japan mico step motor		

Dispensing System

ES2020 Precise Glue Dispenser

Characteristic

ES2020 is an ideal addition for our robotic 3-axis platform. This cost-effective dispenser supports foot pedal control as well as input signals from the robotic platform and equips vacuum control to prevent leakage. Its light and compact design makes it one of our most popular and easy to operate dispenser.



STANDARD

Model	ES2020	Air Input	70 to 100 psi (5.0 to 7.0 bar)
Dimensions	W-145 x L-225 x H-65 mm	Air Output	1 to 100 psi (0.1 to 7.0 bar)
Weight	1590g	Timer Range	None
Power Input	VAC110 ~220	Vacuum Control	Adjustable
Control Type	Foot pedal	Operation Mode	Steady

ES2060 Quantification Dispenser

Characteristic

Similar to the ES2020, this unit is equipped with the vacuum mechanism to prevent leakage. In addition, this unit has the analog timer which allows the user to adjust the dispensing time, making it convenient for repeat quantified dispensing.



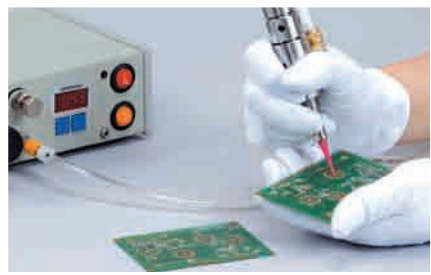
STANDARD

Model	ES2060	Air Output	1 to 100 psi (0.1 to 7.0 bar)
Dimensions	W-145 x L-225 x H-65 mm	Timer Range	Analog timer 0.01 - 99 sec
Weight	1628g	Vacuum Control	Adjustable
Power Input	VAC110 ~220	Memory	Last setting
Control Type	Foot pedal 、Finger switch	Operation Mode	Steady 、Timed
Air Input	70 to 100 psi (5.0 to 7.0 bar)		

ES2070 Digital Quantification Dispenser

Characteristic

Similar to the ES2060, this unit is equipped with the vacuum mechanism to prevent leakage. In addition, this unit has the digital timer which allows the user to adjust the dispensing time, making it convenient for repeat quantified dispensing and precise timing.



STANDARD			
Model	ES2070	Air Output	1 to 100 psi (0.1 to 7.0 bar)
Dimensions	W-145 x L-225 x H-65 mm	Timer Range	Digital timer 0.01 - 99 sec
Weight	1628g	Vacuum Control	Adjustable
Power Input	VAC110 ~220	Memory	Last setting
Control Type	Foot pedal 、Finger switch	Operation Mode	Steady 、Timed
Air Input	70 to 100 psi (5.0 to 7.0 bar)		

ES2098 Digital Electronic Dispenser

Characteristic

ES2098 is an advance digital dispenser that supports two barrels. In addition, the user can use foot or finger switch to set up the dispensing time and intermittent dispensing time, or input the values directly by pressing the buttons on the display panel. This user friendly design unit is suitable for repeat and long term operation.



STANDARD			
Model	ES2098	Air Output	1 to 100 psi (0.1 to 7.0 bar)
Dimensions	W-145 x L-285 x H-65 mm	Timer Range	Digital timer 0.01 - 99 sec
Weight	1924g	Vacuum Control	Adjustable
Power Input	VAC110 ~220	Memory	Last setting
Control Type	Foot pedal 、Finger switch	Operation Mode	Steady 、Timed 、Intermittent
Air Input	70 to 100 psi (5.0 to 7.0 bar)		

Dispensing System

ES1800 Dual Gauge Digital Dispenser



Characteristic

Employing the same core technology, not only does the ES1800 achieve the same Characteristic and reliability as the ES2098, this unit also contains an extra gauge for the vacuum. Depending on the viscosity of the glue, this unit can adjust the vacuum volume accordingly. The extra gauge can accurately record the relative vacuum volumes of the various viscosity glues, thereby reducing the error caused by switching various glues.

STANDARD

Model	ES1800	Air Output	1 to 100 psi (0.1 to 7.0 bar)
Dimensions	W-170 x L-285 x H-80 mm	Timer Range	Digital timer 0.01 - 99 sec
Weight	2631g	Vacuum Control	Adjustable
Power Input	VAC110 ~220	Memory	Last setting
Control Type	Foot pedal 、Finger switch	Operation Mode	Steady 、Timed 、Intermittent
Air Input	70 to 100 psi (5.0 to 7.0 bar)		

ES2080 Digital Rotary Valve Dispenser



Characteristic

By integrating the screw feed technology with a precise rotary valve, the ES2080 can achieve complete shutoff and zero dead fluid volume. This specialized auger paste valve is able to utilize any standard needle and provides two types of auger configuration (8 or 16 pitch). Its auger speed range is 0~500 rpm.

STANDARD

Model	ES2080	Air Output	1 to 100 psi (0.1 to 7.0 bar)
Dimensions	W-170 x L-230 x H-73 mm	Timer Range	Digital timer 0.01 - 99 sec
Weight	2052g	Vacuum Control	Adjustable
Power Input	VAC110 ~220	Memory	Last setting
Control Type	Foot pedal 、Finger switch	Operation Mode	Steady 、Timed 、Intermittent
Air Input	70 to 100 psi (5.0 to 7.0 bar)		

ES2088 Rotary Pumping Dispenser

Characteristic

By using a step motor, the ES2088 is the only dispenser that does not require an air input. It can achieve 0.9 degree of angle precision and 0 ~ 120 rpm without wavering. This precise unit can process micro dispensing and is suitable for low viscosity glues. Its Teflon tube can prevent early solidification of the cyanoacrylate..



STANDARD			
Model	ES2088	Air Output	None
Dimensions	W-100 x L-175 x H-85 mm	Timer Range	Digital timer 0.01 - 99 sec
Weight	1135g	Vacuum Control	Adjustable
Power Input	VAC110 ~220	Memory	Last setting
Control Type	24 VDC	Operation Mode	Steady 、Timed
Air Input	None		

ES800 Motorized Vacuum Pen

Characteristic

Built-in vacuum diaphragm pump, no need for a separate air supply. It is the easiest way of picking up flat IC, resistance, and various rounded and small components. Suction pen, suction pads and air hoses are all made of anti-static materials for greater safety and reduced risk of damage to sensitive parts.



- nozzle[0.4mm] -- max.weight(0.6g) -- suitable for flat resistance and other tiny components
- nozzle[1.1mm] -- max.weight(2.0g) -- suitable for small IC (8 ~ 40pins)
- nozzle[1.1mm]+pad[3.2mm] -- max.weight(15g) -- suitable for IC (above 40 pins)
- nozzle[1.1mm]+pad[6.4mm] -- max.weight(60g) -- suitable for small electronic components, etc.
- nozzle[1.1mm]+pad[9.5mm] -- max.weight(120g) -- suitable for bigger electronic components, etc.

STANDARD			
Model	ES800	Vacuum Pump	Diaphragm Type
Dimensions	Controller : W-150 x L-90 x H-150 mm	Air Input	None
Weight	Controller : 1650g Vacuum pen : 25g	Max. Vacuum Pressure	-150mmHg
Power Input	VAC110 and VAC220	Bent Nozzle	Optional
Power Consumption	5W		

Rotary System

● ES3000 Pressure Stabilizer



Characteristic

This patent design pressure stabilizer can adapt into our robotic system or operate stand alone. This unit can stabilize dispensing pressure automatically according to the setting in order to correct the dispensing error due to pressure difference in the barrel. This unit is suitable for long term extreme high precise dispensing.

STANDARD

Model	ES3000	Air Input	70 to 100 psi (5.0 to 7.0 bar)
Dimensions	W-380 x L-250 x H-95 mm	Air Output	1 to 100 psi (0.1 to 7.0 bar)
Weight	2 kg	Timer Range	Digital timer 0.01 - 99 sec
Power Input	110 VAC and 220 VAC	Vacuum Control	Adjustable
Control Type	Foot pedal 、Finger switch		

● ES900 Digital Rotary System



Characteristic

ES900 is a rotary system providing an accurate circular route for the dispensing glue on one or two objects at the same time. This unit employs the core technology of the ES2098 system. Through the use of the step motor, this unit is able to control the speed of the dispensing. Its built-in dispenser and panel display makes this a convenient, space-efficient unit.

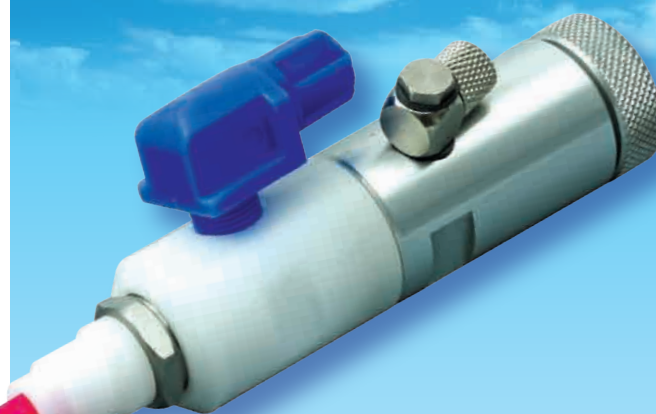
STANDARD

Model	ES900	Air Output	1 to 100 psi (0.1 to 7.0 bar)
Dimensions	W-340 x L-430 x H-450 mm	Timer Range	Digital timer 0.01 - 99 sec
Weight	12.5 kg	Vacuum Control	Adjustable
Power Input	110 VAC and 220 VAC	Operation Mode	Steady 、Timed
Control Type	Foot pedal 、Finger switch	Rotating Speed	0-100 RPM
Air Input	70 to 100 psi (5.0 to 7.0 bar)		

EV100 Diaphragm Valve

Characteristic

This valve is suitable for dispensing small doses of middle to low viscosity materials, especially for material that is highly corrosive. A short opening stroke provides extremely fast, positive shut-off. An external stroke control adjustment makes it easy for the operator to fine tune shot sizes. Using a Teflon design, it offers precise operations and easy maintenance. As well as allows multiple types of normal tip to be used.



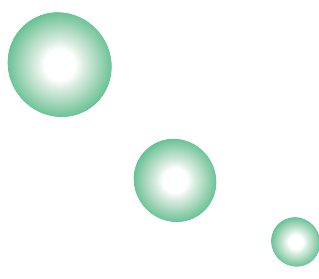
STANDARD

Model	EV100	Weight	120g
Dimensions	W25 X L115mm	Vacuum Control	Adjustable

EV200 Spool Valve

Characteristic

This valve provides precise shot accuracy along with "high volume" capacity and "suck-back" anti-drip function. This valve is suitable for dispensing small doses of middle to high viscosity materials. Its aluminum body is light weight and compact, making it user friendly and can be easily maintained. As well as allows multiple types of normal tip to be used.



STANDARD

Model	EV200	Weight	160g
Dimensions	W25 X L135mm	Vacuum Control	Adjustable

Retainer

Cartridge Retainer

Characteristic

Retainer is suitable for dispense large packing of silicone, epoxy, and other 330g glue tubes. When attach to any of our dispensers, it can be used for potting and beading. Its aluminum body makes it both highly durable and resilient.



STANDARD			
Model	ER330	Model	ER012
Dimensions	W55 X 230mm	Dimensions	W50 X 350mm
Weight	400g	Weight	560g
Cartridge	330g	Cartridge	12oz

AB Cartridge Retainer

Characteristic

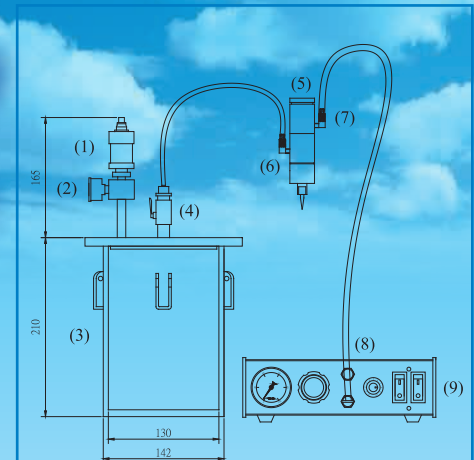
This light-weight and compact patent design retainer is suitable for processing AB glue cartridge. There are different model to fit the size of 1:1, 1:2, 1:4 and 1:10 depend on your usage. When attach to any of our dispensers, it can be used for potting and beading. Its aluminum body makes it both highly durable and resilient.

STANDARD							
Model	EA101	Model	EA102	Model	EA104	Model	EA110
Dimensions	W53 X 160mm	Dimensions	W53 X 160mm	Dimensions	W53 X 160mm	Dimensions	W53 X 160mm
Weight	260g	Weight	260g	Weight	260g	Weight	260g
Cartridge	1 : 1	Cartridge	1 : 2	Cartridge	1 : 4	Cartridge	1 : 10

Fluid reservoirs

Characteristic

By increasing the air pressure, this reservoir is able to extract the dispensing material stored inside. Unlike the standard barrel, which can only hold up to a volume of 55 ml, this fluid reservoir can save the trouble of frequent refilling as it has a greater volume capacity. The user can connect the output valve with any standard precision valve or our patent controller. The stainless steel design can operate under high pressure (200 psi) and 200 psi operating pressure easily handles fluid with viscosity up to 70,000 cps. Please contact us for more details and customization is also available.



- | | |
|----------------------------|------------------|
| 1. Slide Valve (Air Input) | 2. Air Regulator |
| 3. Pressure Pump | 4. Output Valve |
| 5. Precision Valve | 6. Glue Input |
| 7. Air Input | 8. Air Output |
| 9. Dispenser | |

STANDARD

Model	EP03	Model	EP04	Model	EP09	Model	EP20
Dimensions	W-140 X H-200mm	Dimensions	W-140 X H-250mm	Dimensions	W-216 X H-250mm	Dimensions	W-267 X H-380mm
Weight	12kg	Weight	15kg	Weight	20kg	Weight	30kg
Volume	3L	Volume	4L	Volume	9L	Volume	20L

EP 1000 Digital Reservoir Controller

Characteristic

This patent design controller integrates the core technology of ES2070 and connects directly with reservoir. The output of this controller can adapt with normal tip directly. Unlike using valve, the controller can generate high volume dispensing.



STANDARD

Model	EP1000	Weight	2500g
Dimensions	W-325 X L-145 X H-70 mm	Timer Range	0.01 - 99 sec

Reservoir

EP2000 Vacuum Debubbling System



Characteristic

Vacuum debubbling system use vacuum motor to pump out the air inside the reservoir. The pressure generate in the chamber will extract all the bubbles in the adhesive material

STANDARD

Model	EP2000	Motor Power	1/2 Hp
Dimensions	W-700 x L-400 x H-250mm	Vacuity	5 x 10 ⁻³ torr
Power Input	VAC110 50/60 HZ	Volume	3L (customization available)
Weight	25kg	Beeper	Yes
Exhaust Volume	200 L/min	Timer Range	1-99 min

EL2000 Quantification Loading System



Characteristic

This patent design system can effectively and accurately dispense middle to low viscosity materials into any receiver of your choice. The dispense volume and Intermittent time can be easily adjust.

STANDARD

Model	EL2000	Repeatability	+/- 0.01cc
Dimensions	W-300 x L-300 x H-500mm	Loading Speed	Adjustable
Power Input	VAC110 50/60 HZ	Operation Mode	Timed 、 Intermittent
Weight	10kg	Timer Range	1-99 sec
Loading Volume	1cc ~ 55cc (customization available)	Loading Number	1~4 (customization available)

EL1000 Horizontal Retainer Loading System

Characteristic

This loading system can resolve the trouble of loading different size of cartridge into 3 to 55cc barrel effectively. It is suitable for middle to high viscosity materials and high loading capacity.



STANDARD

Model	EL1000	Dimensions	W-150 x L-400 X H-150 mm	Weight	3kg
-------	--------	------------	--------------------------	--------	-----

EL1050 Vertical Retainer Loading System

Characteristic

This new patent design loading system can resolve the trouble of loading different size of cartridge into 3 to 55cc barrel effectively. Unlike the horizontal loading system, this system can connect with all of our dispenser to make the loading procedure automatically. It is suitable for middle to low viscosity materials and high loading capacity.



STANDARD

Model	EL1050	Dimensions	W-190 x L-150 X H-200 mm	Weight	2kg
-------	--------	------------	--------------------------	--------	-----

EH1000 Heat Stabilizer

Characteristic

This patent design heat stabilizer can maintain the barrel and needle temperature at certain values. When the material maintain at certain temperature, you can prevent the stage and viscosity change inside the barrel or some material can only de-solidify at certain temperature. It is especially useful with high viscosity material to generate better flow during the process.



STANDARD

Model	EH1000	Power Input	VAC 110 and VAC 220
Dimensions	W-145 x L-225 X H-65 mm	Temperature Range	Room temp to 150°C
Weight	2160g	Temperature Setting	Two sets (one for barrel 、one for tip)

UV Cure

EU2000 UV Cure Illuminator



Characteristic

The UV illuminator system is designed for UV adhesive curing application, such as bonding, wire tacking, sealing, and potting. It utilizes a 100W high pressure mercury arc lamp and delivers up to 4 W/cm2 of UV light at UVA wavelength range. It requires few seconds to complete the full curing process when most of the UV adhesives meet the UV light this system emits.

STANDARD

Model	EU2000	Warm-up Time	5 min
Power Input	VAC220 50/60 HZ	Timer Range	0-99 sec
UV Power	100W	Dimensions	L-230X W-175X H-240mm
UV Intensity	> 4000mW/cm2 (UVA)	Weight	5Kg
UV Wave Length	365nm	UV Source	SQ-UV 100W lamp module
UV Life Time	2,000 Hours		

EU2050 UV Cure LED System UV LED



Characteristic

This high tech UV illuminator system is utilized the latest LED technology. This UV LED life time is 20X longer than the tradition UV lamp and there is no warm up time necessary. This will not only save more time but the UV replacing cost as well. The impact design also makes it really easy to adapt into any automation system. The UV LED will not generate large amount of heat during the illumination which can protect your product damage from heat.

STANDARD

Model	EU2050	Warm-up Time	NA
Power Input	VAC 110-130	Timer Range	0-99 sec
UV Power	4000mW / cm2 (UVA)	Dimensions	L-110 X W-55 X H-65mm
UV Intensity	04 06	Weight	600g
UV Wave Length	365nm	UV Source	Japan Super LED
UV Life Time	20,000 Hours		

EU3000 UV Cure Hood System

Characteristic

This UV hood system is a flood light system with 400W UV lamp inside. The high intensity UV light makes most of the UV glue cured in 20 seconds. The special UV cut design also makes operation more safety. The compact size is good for the experimental and compact production line. Also the box size can be customized to fit your process and product.



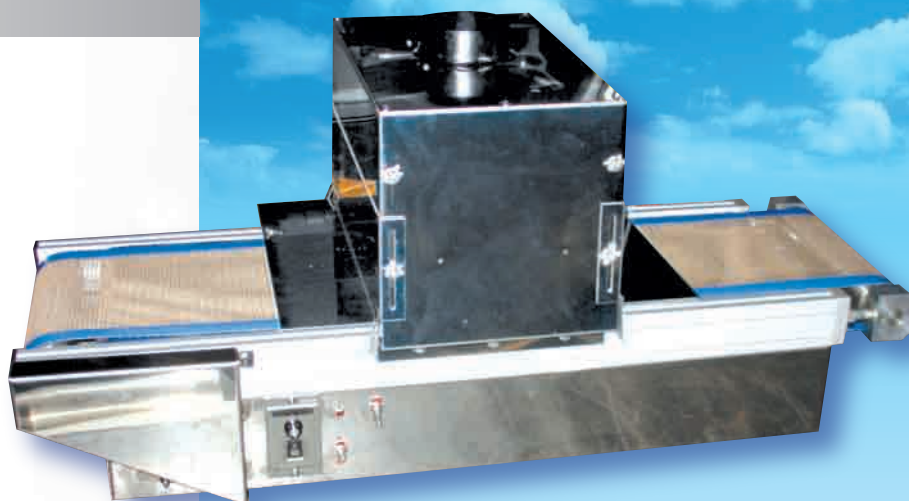
STANDARD

Model	EU3000	Warm-up Time	5min
Power Input	VAC200-240 50/60HZ	Timer Range	0-99 sec
UV Power	400 ,1000 ,2000W	Beeper	Yes
UV Intensity	> 80mW/cm2 (UVA)	Dimensions	L-400 X W-450 X H-390mm
UV Wave Length	365nm	Weight	17Kg
UV Life Time	1,000 Hours	UV Source	TF-UV lamp

EU3500 UV Cure Belt System

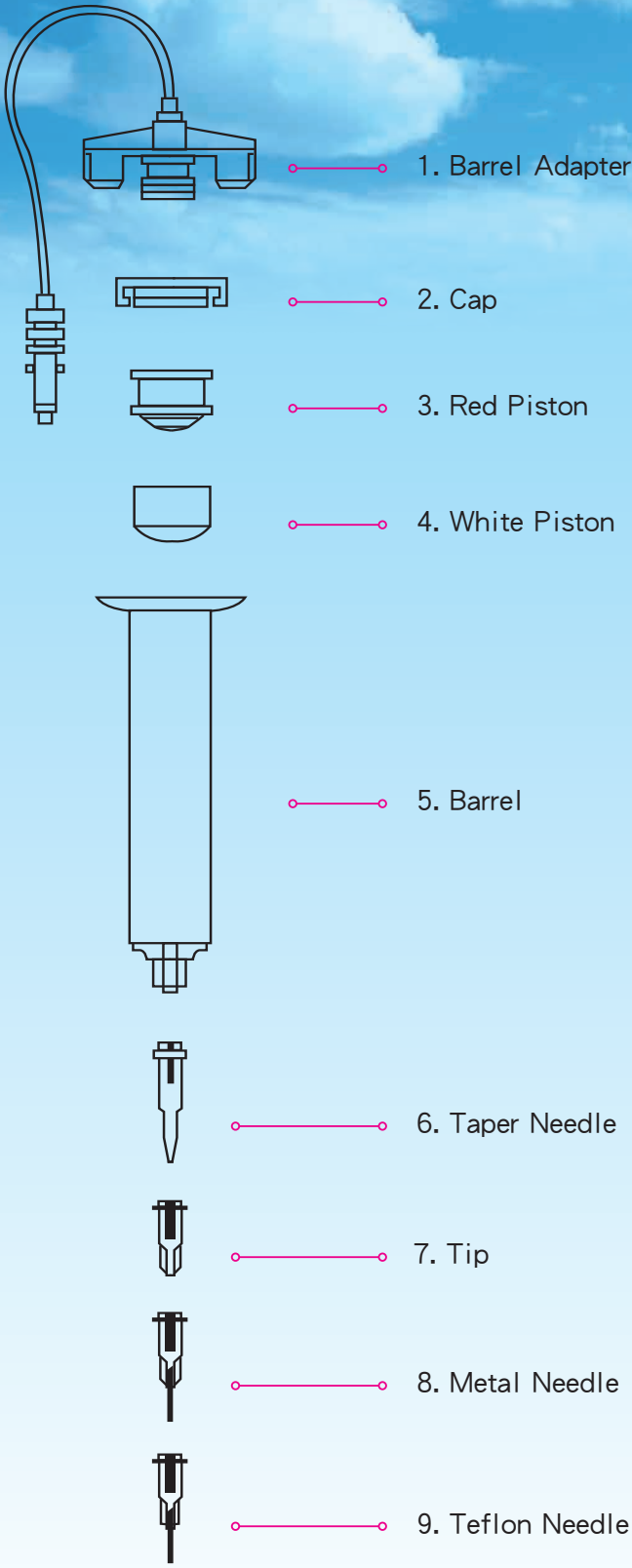
Characteristic

This UV belt system is a compact, table top UV conveyor designed for auto line production. It is built in one 1000W high power UV lamp flood system, this high intensity UV light makes the UV glue cured within the time from left side to right side conveyor. This high intensity 1000W UV lamp also makes the UV glue cured even at the high attitude, and produces a low temperature environment. In addition, the conveyor speed, conveyor direction and the distance from lamp to belt are changeable. Also the size of the box and length of the belt can be customized.

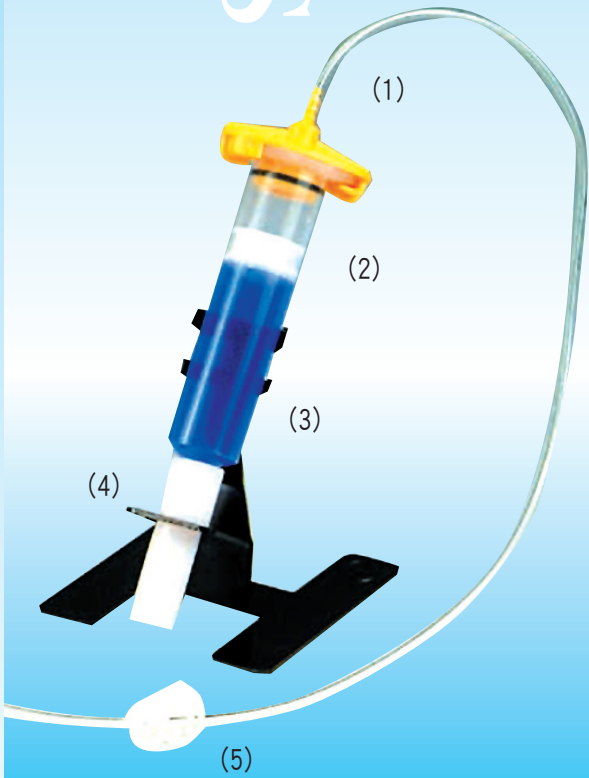


STANDARD

Model	EU3500	Warm-up Time	5min
Power Input	VAC220 50/60HZ	Material Input Height	0-95mm
UV Power	400, 1000, 2000 W	Conveyor Height	20-210mm
UV Intensity	> 120mW/cm2 (UVA)	Belt Surface	Teflon
UV Wave Length	365nm	Dimensions	L-1450 X W-360 x H-502 mm
UV Life Time	1,000 Hours	Weight	~60 kg



Barrel Parts



- | | |
|-------------------|-----------------|
| 1. Barrel Adapter | 4. Barrel Stand |
| 2. Piston | 5. Air Lock |
| 3. Barrel | |

Barrel



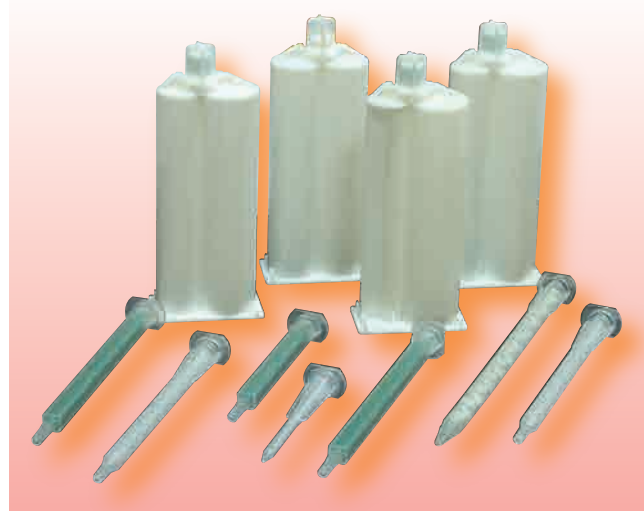
Characteristic

1. The transparent barrels are suitable for standard adhesive and material. Amber and dark brown barrels are ideal for UV cure adhesive and material. Black barrels are used for light sensitive adhesive and material.
2. Usage of these safe and precise barrels can enhance the dispensing process by increasing the accuracy and efficiency.
3. It is recommended that one chooses the barrel accordingly as different types of dispensing glue require different sized and colored barrels in order to prevent leakage or solidification.

STANDARD

Part #	Diameter	Length	Volume
EB03	11 mm	75 mm	3cc
EB05	15 mm	80 mm	5cc
EB10	18 mm	90 mm	10cc
EB30	25 mm	122 mm	30cc
EB55	25 mm	180 mm	55cc

AB Cartridge



Characteristic

It is suitable for mixing two kinds of material with different ratio during your working process. With retainer you can connect it with any dispenser.

STANDARD

Part #	Diameter	Length	Volume
AB101	45 mm	115 mm	1 : 1
AB102	45 mm	115 mm	1 : 2
AB104	45 mm	115 mm	1 : 4
AB110	45 mm	115 mm	1 : 10
AB01	3.00 mm	63 mm	Mixer
AB02	5.40 mm	85 mm	Mixer
AB03	6.35 mm	153 mm	Mixer

Cartridge



Characteristic

The largest volume for a normal barrel is 55cc and if larger volume is necessary you will need to use cartridge. With retainer you can connect it with any dispenser and improve your working process by reducing the material refilling time.

STANDARD

Part #	Diameter	Length	Volume
AC06	40 mm	181 mm	6 oz.
AC08	40 mm	224 mm	8 oz.
AC12	40 mm	311 mm	12 oz.

Accessories

Taper Needle



Length :	Part #	ID (mm)	Color
33.0 mm	TT22	0.41 mm	Blue
	TT20	0.58 mm	Pink
	TT18	0.84 mm	Green
	TT16	1.19 mm	Gray
	TT14	1.60 mm	Olive

Slanted Needle



Length :	Part #	ID (mm)	Color
31.0 mm	TL25	0.25 mm	Red
	TL22	0.41 mm	Blue
	TL20	0.58 mm	Pink
	TL18	0.84 mm	Green

Anti-Static/UV



Length :	Part #	ID (mm)	Color
33.0 mm	TU25	0.25 mm	Black
	TU22	0.41 mm	
	TU20	0.58 mm	
	TU18	0.84 mm	

Polyethylene Flexible Needles



Length :	Part #	ID (mm)	Color
0.5"	TP25	0.25 mm	Red
	TP22	0.40 mm	Blue
1.0"	TP20	0.60 mm	Pink
1.5"	TP18	0.80 mm	Green
2.0"	TP15	1.35 mm	Amber
	TP14	1.55 mm	Olive

Metal Teflon Needle



Length :	Part #	ID (mm)	Color
0.5"	TM25	0.26 mm	Pink
1.0"			Pink
1.5"	TM20	0.60 mm	Gray

Teflon Needle



Length :	Part #	ID (mm)	Color
0.5"	TF30	0.305 mm	Lavender
	TF24	0.559 mm	Red
1.0"	TF23	0.660 mm	Blue
	TF22	0.711 mm	Black
1.5"	TF20	0.864 mm	Yellow
2.0"	TF18	1.067 mm	Pink
	TF16	1.346 mm	Purple
	TF14	1.676 mm	Olive

Double thread metal tip needle



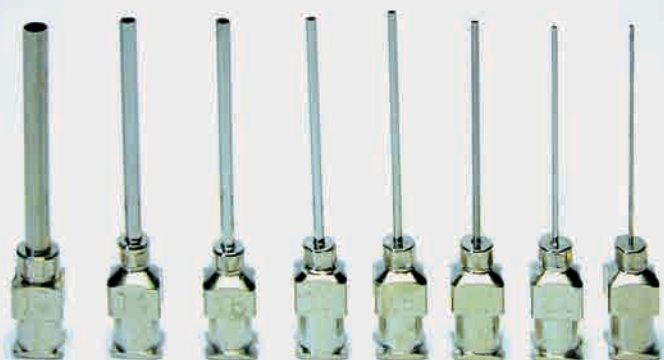
Length :	Part #	OD (mm)	ID (mm)	Color
0.25"	TD32	0.25 mm	0.09 mm	Yellow
0.5"	TD30	0.30 mm	0.16 mm	Lavender
1.0"	TD27	0.42 mm	0.21 mm	Clear
1.5"	TD25	0.51 mm	0.26 mm	Red
	TD23	0.65 mm	0.34 mm	Orange
	TD22	0.72 mm	0.41 mm	Blue
	TD21	0.82 mm	0.51 mm	Purple
Angle :	TD20	0.91 mm	0.60 mm	Pink
45°	TD18	1.28 mm	0.84 mm	Green
90°	TD15	1.84 mm	1.37 mm	Amber
	TD14	1.84 mm	1.55 mm	Olive

Single thread metal tip needle



Length :	Part #	OD (mm)	ID (mm)	Color
0.25"	TS27	0.40 mm	0.16 mm	Gray
0.5"	TS26	0.45 mm	0.21 mm	Amber
1.0"	TS25	0.50 mm	0.26 mm	Orange
1.5"	TS24	0.55 mm	0.31 mm	Red
	TS23	0.63 mm	0.33 mm	Blue
	TS22	0.70 mm	0.40 mm	Black
	TS21	0.80 mm	0.50 mm	Green
	TS20	0.90 mm	0.60 mm	Yellow
Angle :	TS19	1.07 mm	0.77 mm	Light
45°	TS18	1.26 mm	0.96 mm	Pink
90°	TS17	1.47 mm	1.17 mm	Lavender
	TS16	1.65 mm	1.35 mm	White

Stainless needle



Length :	Part #	OD (mm)	ID (mm)
0.25"	SS27	0.40 mm	0.16 mm
0.5"	SS26	0.45 mm	0.21 mm
1.0"	SS25	0.50 mm	0.26 mm
1.5"	SS24	0.55 mm	0.31 mm
2.0"	SS23	0.63 mm	0.33 mm
	SS22	0.70 mm	0.40 mm
	SS21	0.80 mm	0.50 mm
	SS20	0.90 mm	0.60 mm
	SS19	1.07 mm	0.77 mm
	SS18	1.26 mm	0.96 mm
	SS17	1.47 mm	1.17 mm
	SS16	1.65 mm	1.35 mm
	SS15	1.80 mm	1.40 mm
	SS14	2.00 mm	1.60 mm
	SS13	2.40 mm	2.00 mm
	SS12	2.80 mm	2.15 mm
	SS11	3.02 mm	2.42 mm
	SS10	3.40 mm	2.80 mm

Length and Angle can be customized.

Accessories

Barrel Adapter



Characteristic

This high quality adapter can provide precise and fluent air pressure between barrel and dispenser in order to create high working efficiency. Length customization is available.

Part #	Diameter	Length	Specification
EA003	11 mm	150 cm	Suitable for 3cc barrel
EA005	15 mm	150 cm	Suitable for 5cc barrel
EA010	18 mm	150 cm	Suitable for 10cc barrel
EA030	25 mm	150 cm	Suitable for 30cc and 55cc barrel

Piston



Characteristic

This safety PE piston will fit in the barrel perfectly in order to prevent any residual adhesive remain on the wall during the compression. The red piston is ideal for viscous fluids while the white piston is for standard fluids and black piston is for UV and light sensitive fluids.

Part #	Diameter	Specification
EA203	11 mm	Suitable for 3cc barrel
EA205	15 mm	Suitable for 5cc barrel
EA210	18 mm	Suitable for 10cc barrel
EA230	25 mm	Suitable for 30cc and 55cc barrel

Cap



Characteristic

This safety PE cap will fit on top of the barrel perfectly to prevent obstructed and leakage.

Part #	Diameter	Specification
EA103	11 mm	Suitable for 3cc barrel
EA105	15 mm	Suitable for 5cc barrel
EA110	18 mm	Suitable for 10cc barrel
EA130	25 mm	Suitable for 30cc and 55cc barrel

Tip

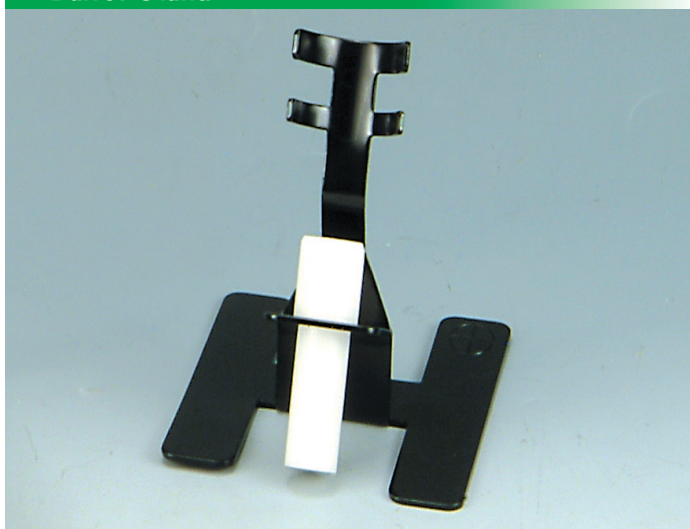


Characteristic

This safety PE tip will fit on all sizes and brands of barrel to prevent obstructed and leakage. The orange and black tip is for UV and light sensitive fluids.

Part #	Color	Specification
EA30C	Clear	Suitable for normal adhesive
EA30O	Orange	Suitable for UV adhesive
EA30B	Black	Suitable for light sensitive adhesive

Barrel Stand



Characteristic

This barrel stand can hold all sizes and brands of barrel as well as to prevent obstructed and leakage of the needle. The body is highly durable and light weighted.

Part #	Specification
EA40	Fit all sizes and brands of barrel and needle

Retainer Stand



Characteristic

This stand can hold all sizes and brands of retainer and valve in order to prevent stress generate from long term usage. Customization is available.

Part #	Specification
EA50	Fit all sizes and brands of retainer and valve

Dispensing Pen



Characteristic

This patent design dispensing pen can connect with our Rotary Pumping Dispenser. Its aluminum body makes it both highly durable and light weighted. You will be able to operate the dispenser by finger tip.

Part #	Specification
EA60	Connect with ES2080 Rotary Pumping Dispenser

Finger Switch



Characteristic

This convenient finger switch can attach on all sizes and brands of barrel and connect with all of our dispensers. With this finger switch, you will be able to replace the foot pedal during the dispenser operation.

Part #	Specification
EA75	Fit all sizes and brands of barrel